



**Beaufort County**  
**Public Works**  
**Stormwater Infrastructure**  
*Project Summary*

**Project Summary:** Ball Park Road / Village Creek Outfall

**Narrative Description of Project:**

Project improved 5,476 L.F. drainage system. Reconstructed 5,476 L.F. of outfall ditch and workshelf. Replaced (1) crossline pipe. Upsized (4) access pipes. Installed (3) access pipes, (2) access gates, rip rap and hydroseeded for erosion control.

**Completion:** Jan-13

| <b>2011-005A / Ball Park Rd / Village Creek Outfall</b>          | <b>Labor Hours</b> | <b>Labor Cost</b>  | <b>Equipment Cost</b> | <b>Material Cost</b> | <b>Contractor Cost</b> | <b>Indirect Labor</b> | <b>Total Cost</b>  |
|--|--------------------|--------------------|-----------------------|----------------------|------------------------|-----------------------|--------------------|
| AGI / Access Gate - Installed                                    | 37.5               | \$884.65           | \$112.54              | \$515.43             | \$0.00                 | \$587.80              | \$2,100.42         |
| APINS / Access pipe - installed                                  | 70.0               | \$1,580.56         | \$746.55              | \$1,439.24           | \$0.00                 | \$916.16              | \$4,682.51         |
| AUDIT / Audit Project  | 2.5                | \$52.23            | \$0.00                | \$0.00               | \$0.00                 | \$33.08               | \$85.30            |
| DLO / Ditch Layout   | 6.0                | \$134.79           | \$12.06               | \$19.80              | \$0.00                 | \$83.58               | \$250.23           |
| HAUL / Hauling   | 183.0              | \$3,961.55         | \$2,065.10            | \$4,684.69           | \$0.00                 | \$2,517.31            | \$13,228.65        |
| HYDR / Hydroseeding  | 121.0              | \$2,708.53         | \$915.38              | \$1,344.05           | \$0.00                 | \$1,577.69            | \$6,545.65         |
| LM / Loading Materials   | 22.0               | \$526.50           | \$294.36              | \$125.58             | \$0.00                 | \$366.54              | \$1,312.98         |
| NONPRO / Non-Professional Services                               | 0.0                | \$0.00             | \$0.00                | \$0.00               | \$246.30               | \$0.00                | \$246.30           |
| ODCO / Outfall ditch - cleaned out                               | 390.0              | \$8,682.15         | \$4,826.76            | \$2,338.96           | \$0.00                 | \$4,614.20            | \$20,462.07        |
| ODGRB / Outfall ditch - grubbed                                  | 52.0               | \$1,181.60         | \$372.33              | \$338.79             | \$0.00                 | \$658.74              | \$2,551.46         |
| ONJV / Onsite Job Visit  | 47.0               | \$1,472.10         | \$188.94              | \$147.00             | \$0.00                 | \$1,153.87            | \$2,961.91         |
| PI / Project Inspection  | 2.0                | \$80.46            | \$8.04                | \$9.00               | \$0.00                 | \$67.92               | \$165.42           |
| SC / Sediment Control  | 40.0               | \$911.70           | \$90.86               | \$92.97              | \$0.00                 | \$594.10              | \$1,689.63         |
| SG / Shoot Grade   | 40.0               | \$898.60           | \$80.40               | \$42.60              | \$0.00                 | \$557.20              | \$1,578.80         |
| UTLOC / Utility locates  | 1.0                | \$20.89            | \$0.00                | \$0.00               | \$0.00                 | \$13.23               | \$34.12            |
| WSDR / Workshelf - Dressed                                       | 5.0                | \$119.75           | \$60.70               | \$16.22              | \$0.00                 | \$83.40               | \$280.07           |
| WSGRB / Workshelf - Grubbed                                      | 271.0              | \$6,601.83         | \$4,593.79            | \$1,410.87           | \$0.00                 | \$4,581.87            | \$17,188.36        |
| <b>2011-005A / Ball Park Rd/ Village Creek Outfall Sub Total</b> | <b>1,290.0</b>     | <b>\$29,817.89</b> | <b>\$14,367.81</b>    | <b>\$12,525.20</b>   | <b>\$246.30</b>        | <b>\$18,406.68</b>    | <b>\$75,363.88</b> |
| <b>Grand Total</b>   | <b>1,290.0</b>     | <b>\$29,817.89</b> | <b>\$14,367.81</b>    | <b>\$12,525.20</b>   | <b>\$246.30</b>        | <b>\$18,406.68</b>    | <b>\$75,363.88</b> |

**Before**



**During**



**After**





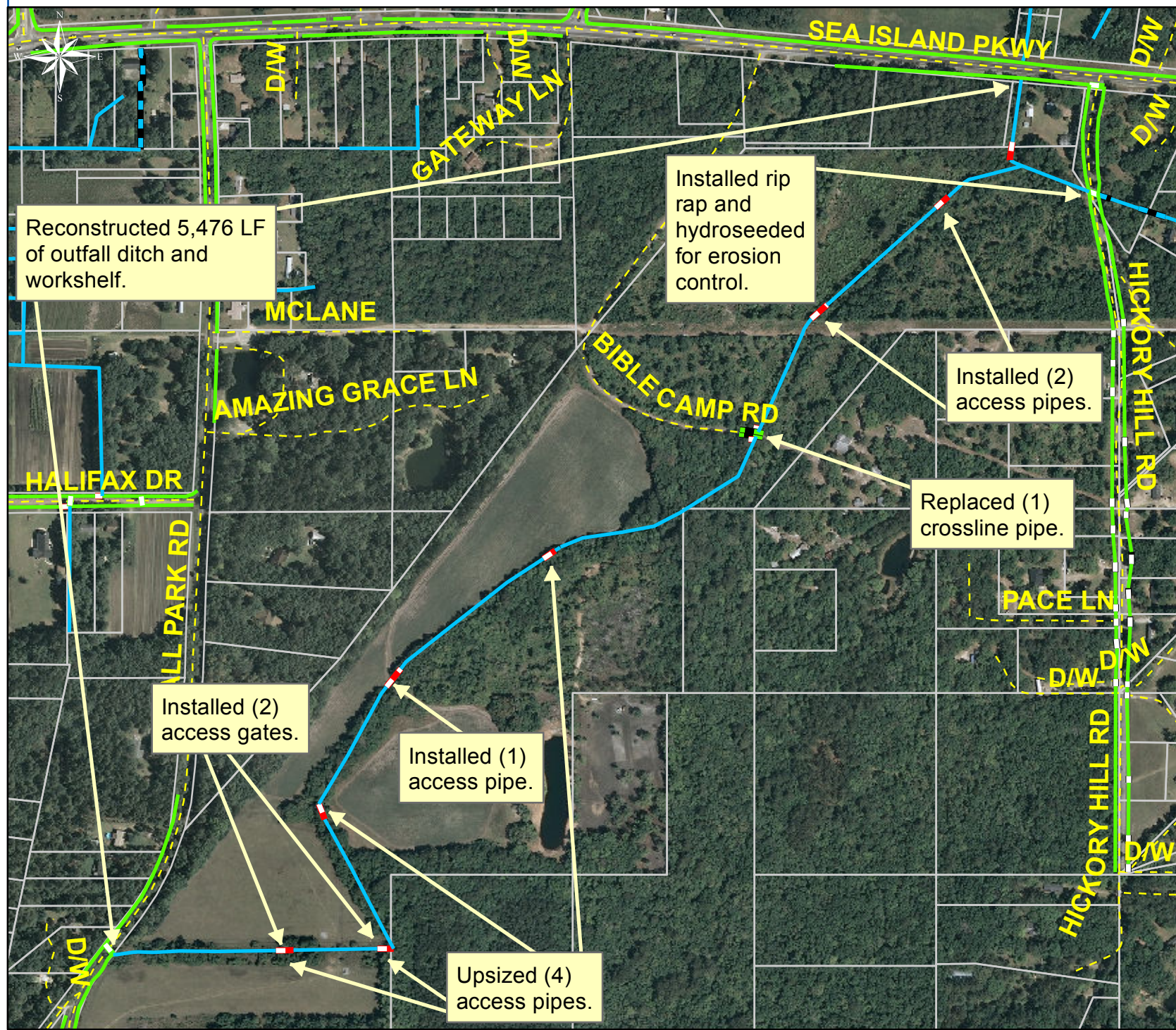
**Project: Ballpark Road/ Village Creek**

**Activity: Drainage Enhancement and Restoration**

**Project #: 2011-005A**

**Township: St. Helena Island**

**Completed: January 2013**



**Legend**

**TYPE**

- River
- Creek/Stream
- River/Creek/Marsh BANK
- Channel (fka Outfall)
- Channel Pipe
- Lateral
- Lateral Pipe
- Roadside
- Roadside Pipe
- Road Pipe
- Crossline Pipe
- Driveway Pipe
- Access Pipe
- Bleeder Pipe
- Parcels



1 inch = 491 feet